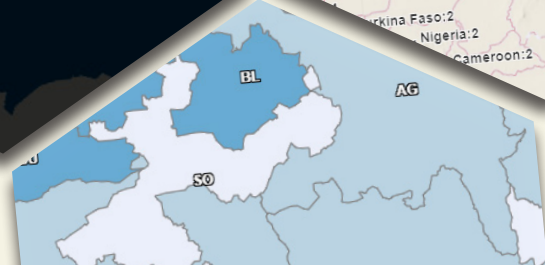
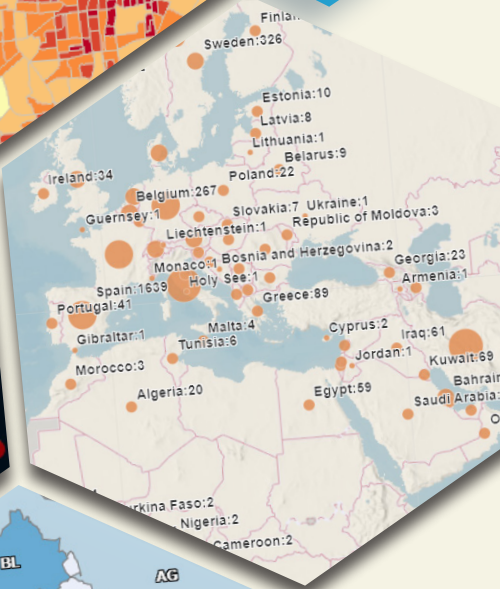
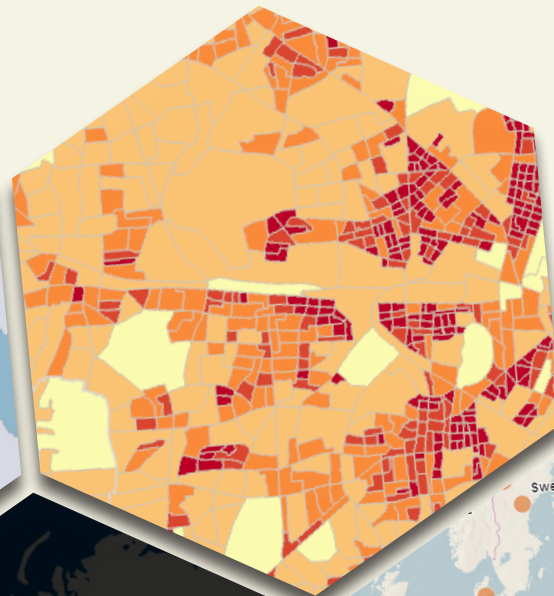
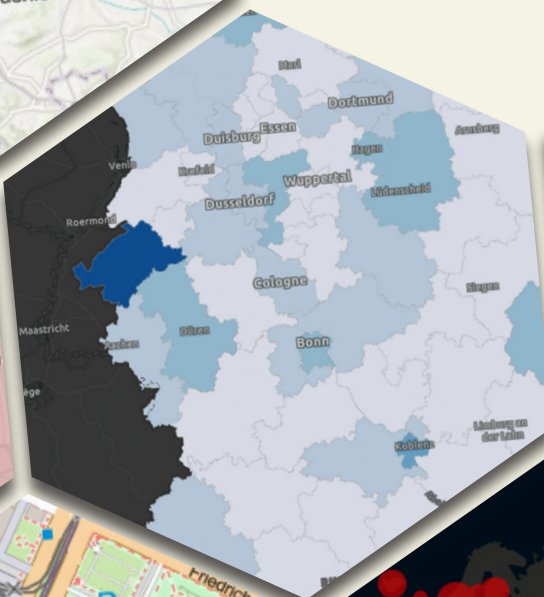
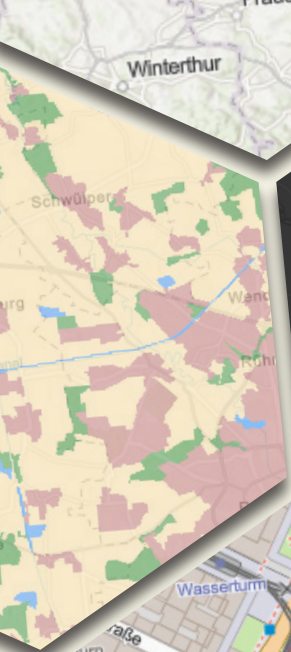
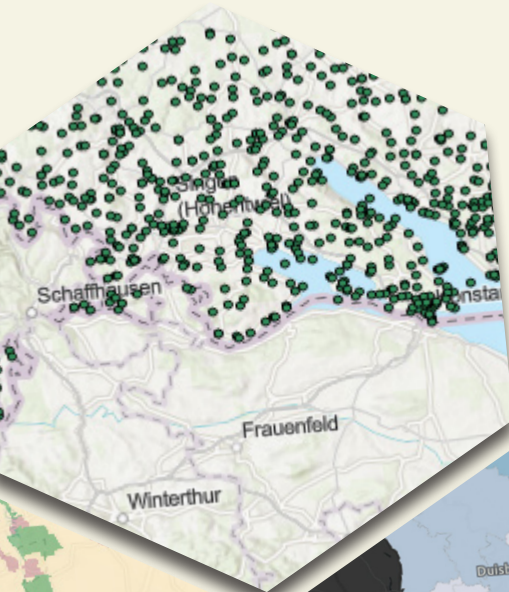


Monitoring the situation

Plan with foresight & take action backed by data



Monitoring the situation - any time in real-time



Your locations, employees, assets, and resources are distributed - and you need a fast, reliable and central overview? Capture distributed information and create a dashboard for a common view.

What we offer

- We offer a web-based survey tool and an interactive dashboard
- You decide the information that needs to be reported – we configure the web tools
- We provide you with your preconfigured, individual environment within a day, deployed in the cloud or on premise within your systems
- From the first day, you'll be able to work with this common operational view of all your distributed information. While we're configuring your dashboard, you'll be trained during a hands-on technical briefing of the system - to enable you to build on this knowledge and configure your system to create more dashboard views

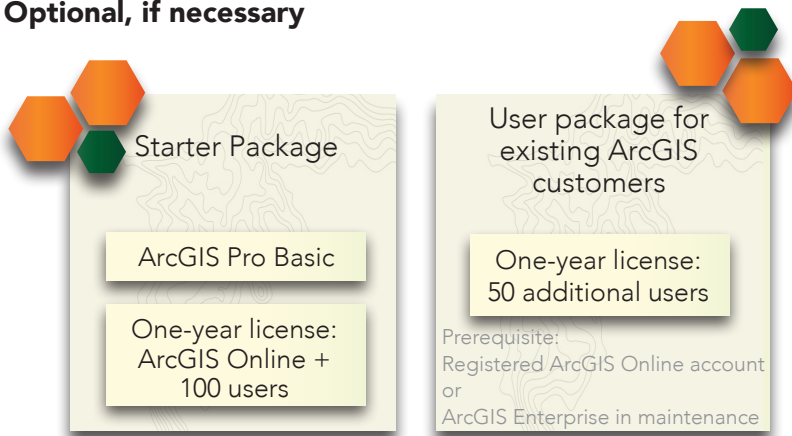
What you get

- You'll get to monitor the current situation to make decisions at a glance, supported by a workflow from messaging through reporting
- Numbers, lists, charts and map data are fused together into one visualization application
- Pick your key performance indicators and visualize them on the dashboard, fast and in real-time
- All tools are cloud-native, reliable, secure and configurable

Details of our services at a glance

- Collaborate to define which data should be collected and reported
- Set up the cloud environment in ArcGIS Online
- Create the surveys in Survey123 for ArcGIS
- Create an interactive map and configure a dashboard in ArcGIS

Optional, if necessary



If you're interested or have any questions:

Please send an e-mail under the subject "Monitoring the situation" to:

sales@esri.de

 **esri Deutschland**
THE SCIENCE OF WHERE

 **esri Suisse**
THE SCIENCE OF WHERE

Esri Deutschland GmbH
esri.de

Esri Schweiz AG
esri.ch